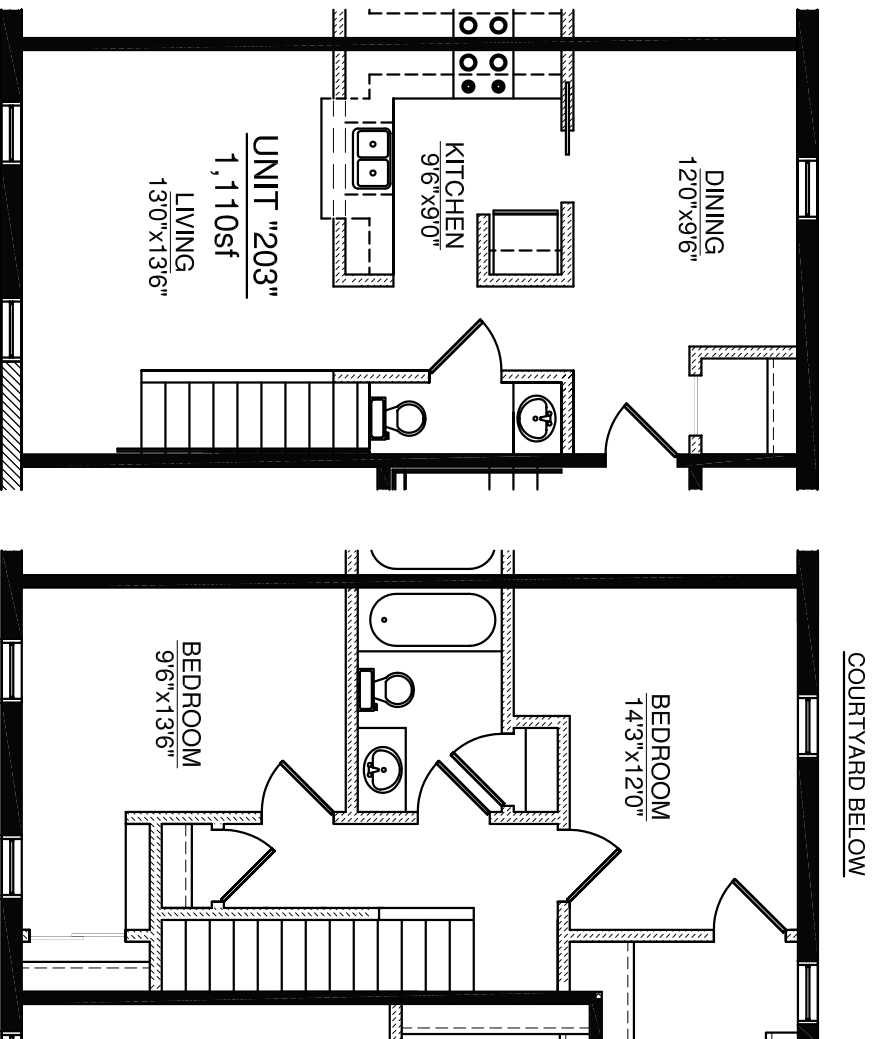


**THE COMMERCIAL HOUSE APARTMENTS**  
 A BEAUTIFUL REMODEL OF A HISTORIC 1875  
 STRUCTURE IN THE HEART OF DOWNTOWN  
 SPRING VALLEY, MINNESOTA.



THIS 1,110SF SECOND FLOOR "TOWNHOUSE STYLE" UNIT FEATURES SPACIOUS UPPER FLOOR BEDROOMS WITH MORE THAN AMPLE CLOSET SPACE (ONE WALK-IN). THE KITCHEN FEATURES A BREAKFAST BAR. THERE IS A BEAUTIFUL VIEW OF THE COURTYARD ON THE NORTH SIDE OF THE BUILDING AND EASY ACCESS TO THE OFF-STREET TENANT PARKING NEARBY.



SECOND FLOOR  
 (MAIN FLOOR OF UNIT)

THIRD FLOOR  
 (UPPER FLOOR OF UNIT)

**UNIT "203"**  
 1,110sf  
 LIVING  
 13'0"x13'6"

**BEDROOM**  
 14'3"x12'0"

**BEDROOM**  
 9'6"x13'6"

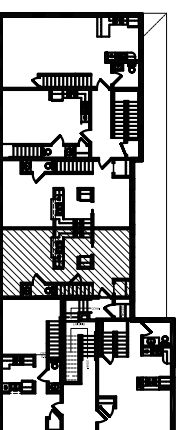
COURTYARD BELOW

**THE COMMERCIAL HOUSE**

On the corner of Broadway & Main, Spring Valley, MN  
 For more information please contact Teresa Walters at  
 323 South Broadway Avenue, Rochester, MN 55904-6506  
 Business Phone (507)281-2093 Fax (507)282-4199  
 E-Mail [twalters@allmanassoc.com](mailto:twalters@allmanassoc.com)

**UNIT 203**

2nd/3rd FLOOR  
 TWO BEDROOM  
 1 & 1/2 BATH  
 1,110SF  
 TWO LEVEL



SECOND FLOOR